

YOU'RE INVITED

Arbor Heights Neighborhood Safe Routes to School Project Community Meeting

JOIN US to learn more about the timeline and construction information of pedestrian improvements* near Arbor Heights Elementary and Westside School!

35th Ave SW will be closed between SW 104th and SW 106th St for up to 4 weeks. Learn about access and detour plans if you live near this route.

*Please refer to the map on the back.

PROJECT INFORMATION & CONTACT

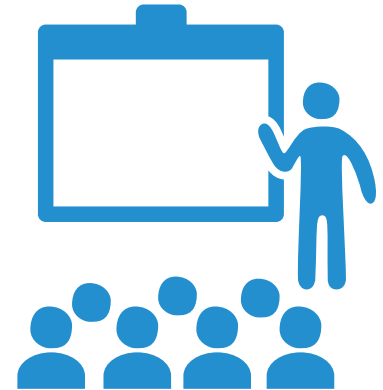
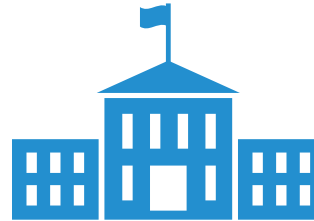
Ching Chan, Communications Lead, (206) 615-0786
Project email: PedestrianImprovements2@seattle.gov
www.seattle.gov/transportation/SafeRoutes
ArborHeightsElementary.htm

Tuesday, April 24, 2018

6:00 – 8:00 PM

Arbor Heights Elementary School
(Cafeteria)

3701 SW 104th St
Seattle, WA 98146



Seattle
Department of
Transportation





This project is funded by the 9-year Levy to Move Seattle, approved by voters in 2015. Learn more about the levy at www.seattle.gov/LevytoMoveSeattle.