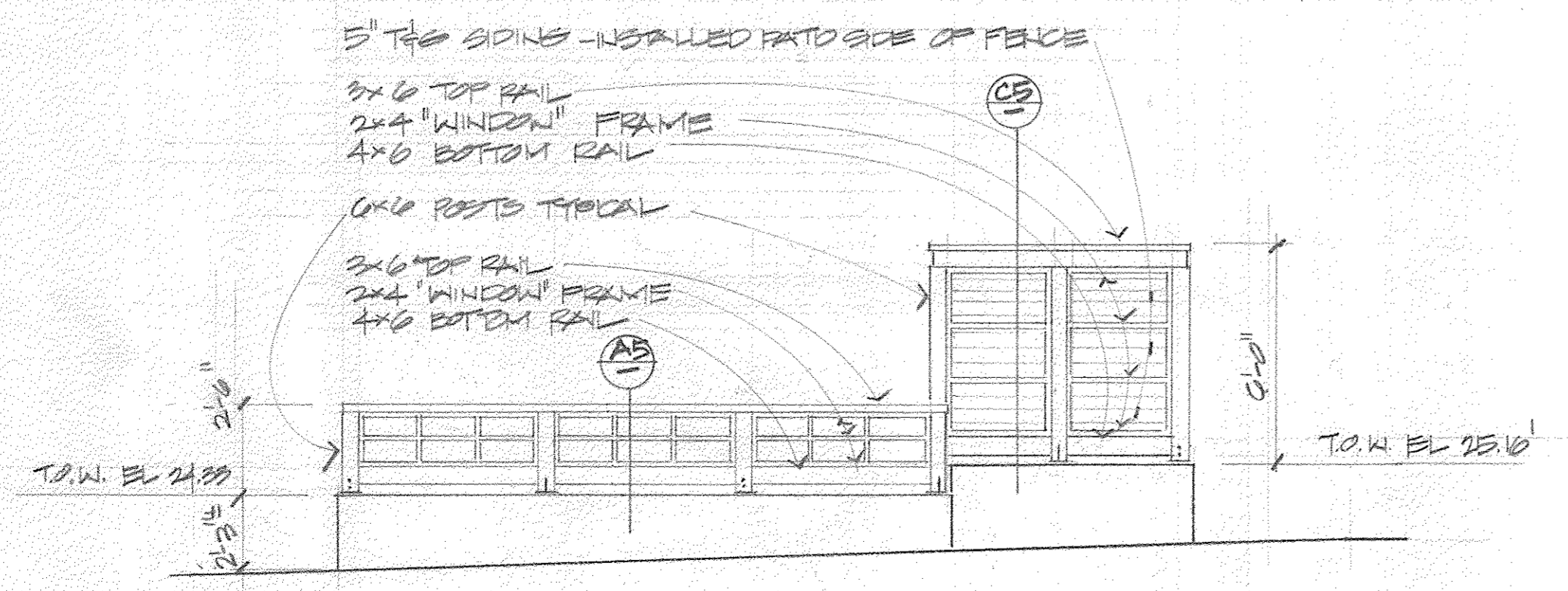
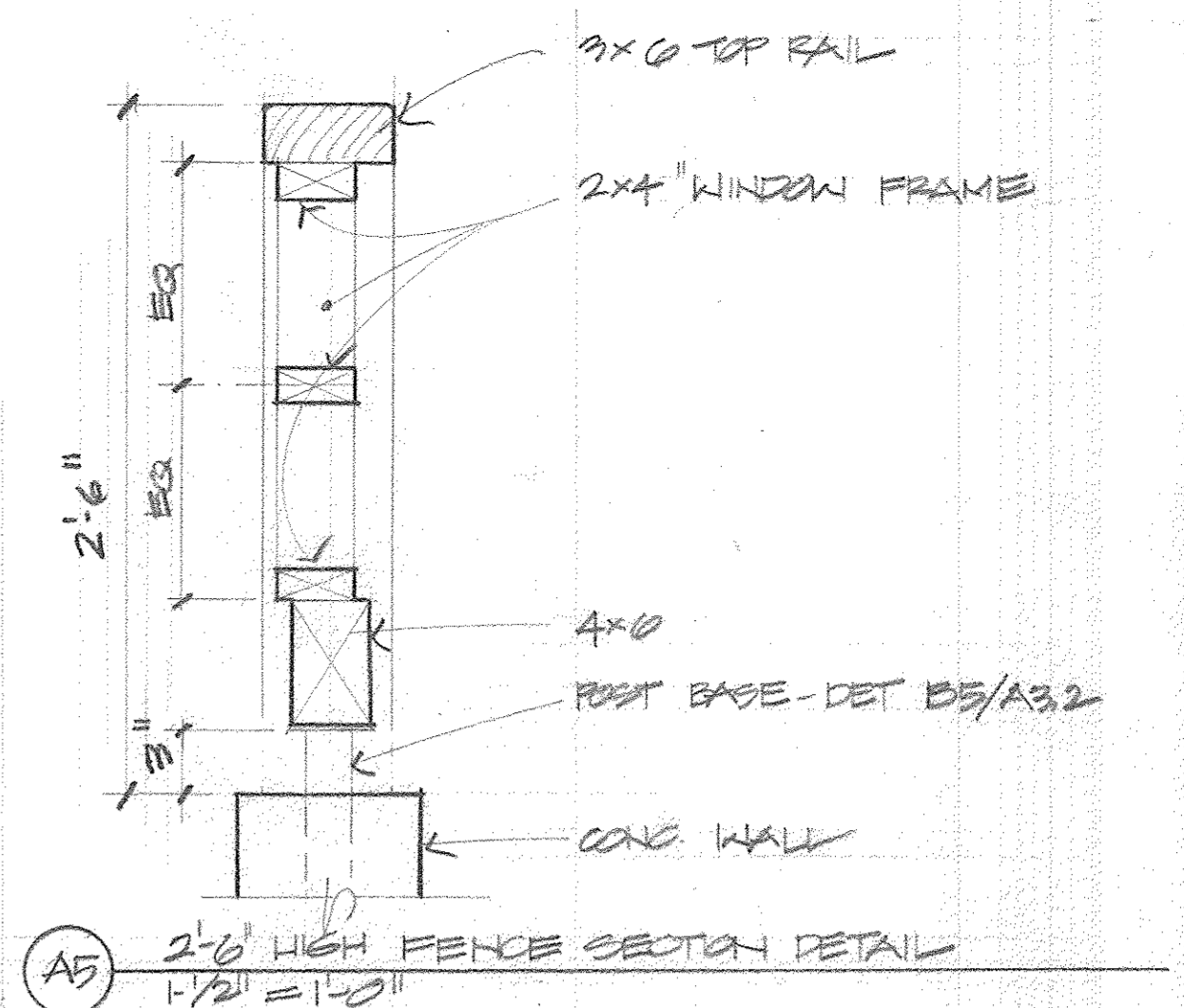


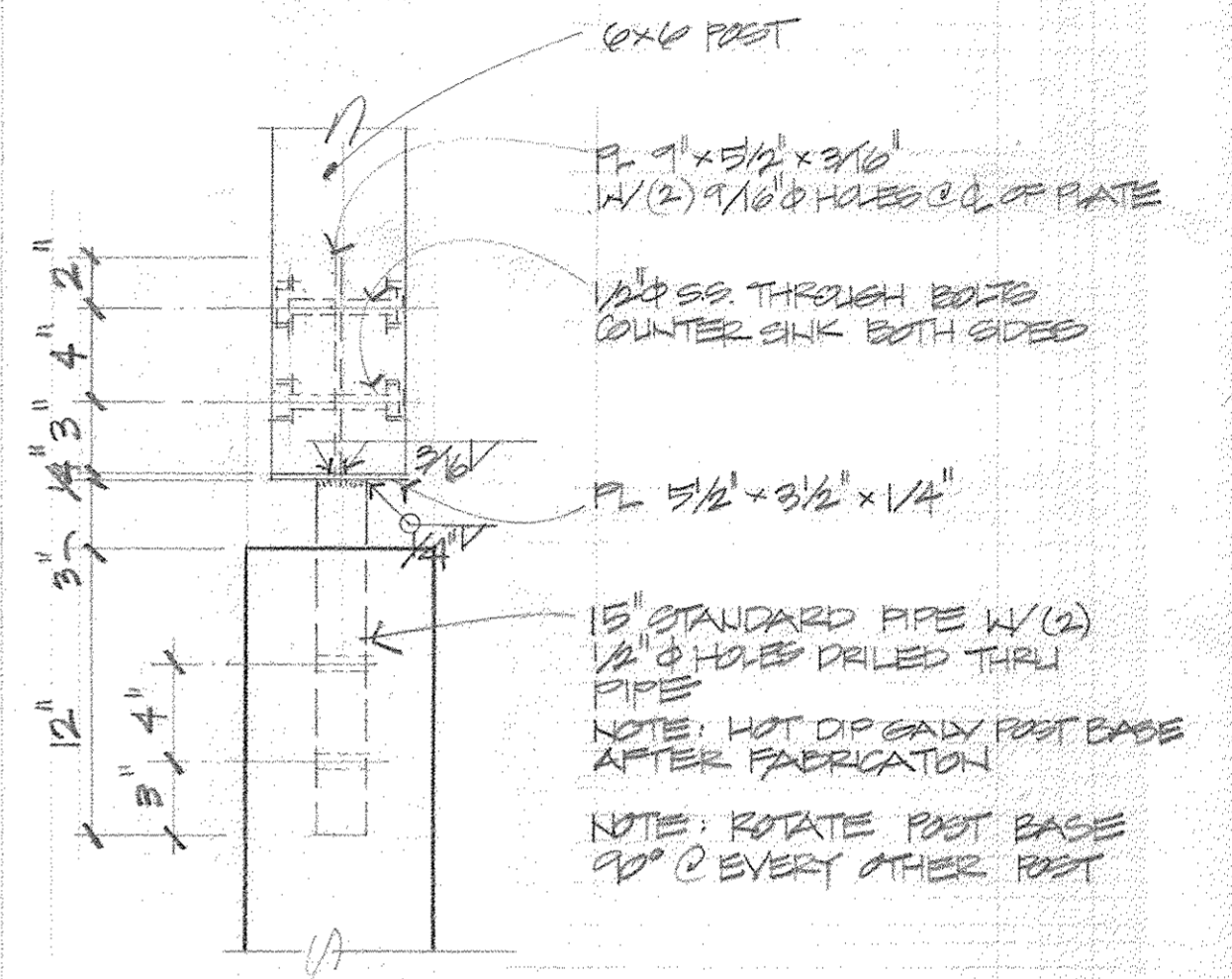
WEST (ALLEY) ELEVATION
1/4" = 1'-0"



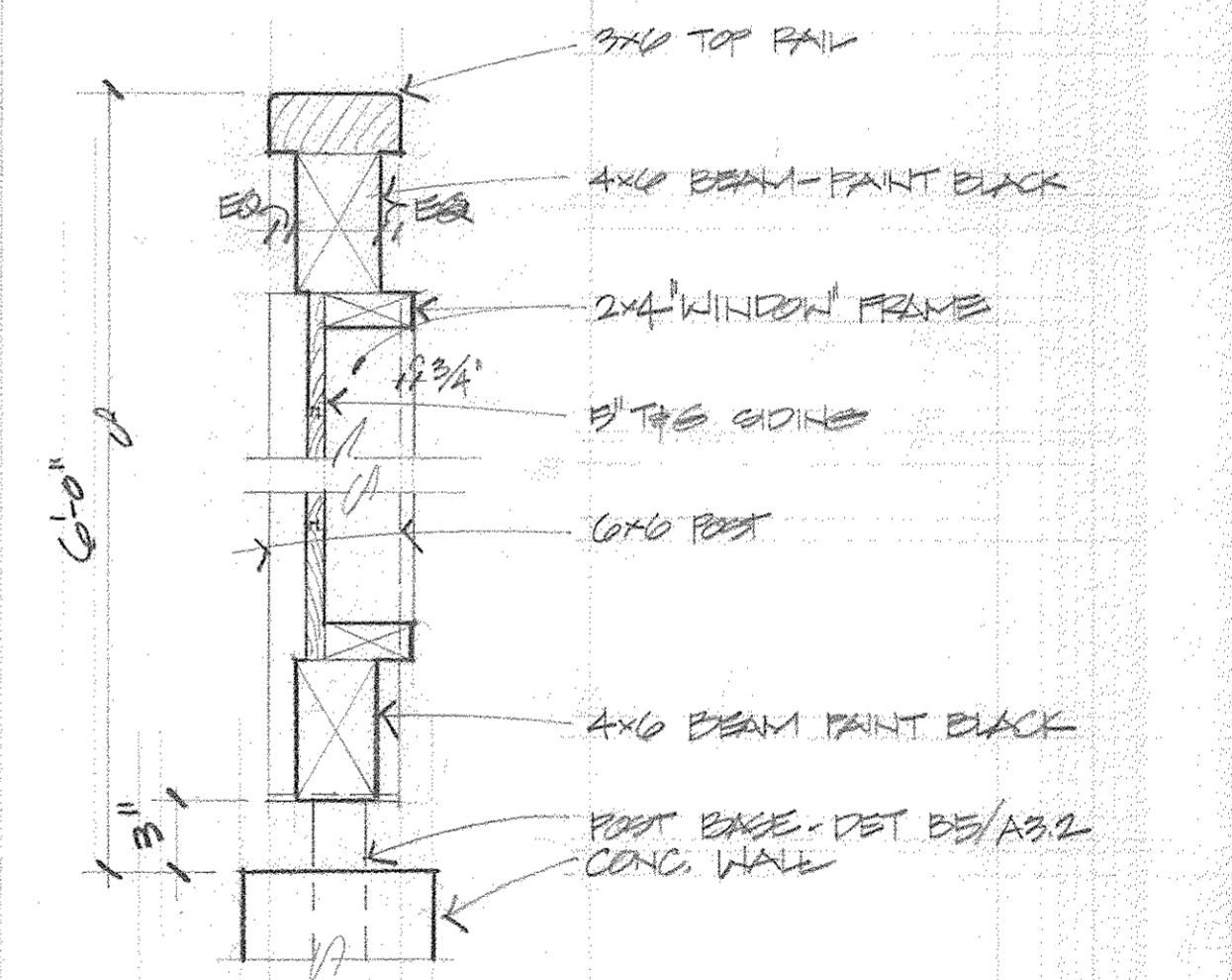
PATIO FENCE ELEVATION @ ALLEY
1/4" = 1'-0"



A5 2'-0" HIGH FENCE SECTION DETAIL
1/2" = 1'-0"



B5 POST BASE DETAIL
1-1/2" = 1'-0"



C5 6'-0" HIGH FENCE SECTION DETAIL
1/2" = 1'-0"

3015 REGISTERED ARCHITECT
JEFFREY M. HAWLETT
STATE OF WASHINGTON

WEST BUILDING ELEVATION
DETAILS
Revised: 2/8/16

A FIR LODGE / ALKI HOMESTEAD
2717 61ST AVENUE SW
SEATTLE, WA
3.2